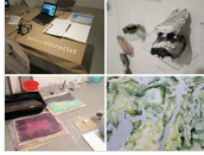


## “A Necessary SHIFT” Exhibition



Ends in 3 days  
At [EFA Project Space](#)  
Media: [Prints](#), [Sculpture](#), [Installation](#)

[Tweet](#) [g+](#) [Like](#)

Organized by: Michelle Levy, Lauren Bierly and Claire Barliant

A Necessary SHIFT is an exhibition and series of events that celebrates and highlights EFA's Residency for Arts-Workers as Artists, now entering its fourth year. With the launch of this exhibition, we launch the official name for the residency: SHIFT residency, and highlight the activities and progress of the artists who have been selected to participate since 2010.

SHIFT residency begins to recognize and nourish the particular art-world subset of artists who work for arts organizations, offering New York City based artist/arts workers a catalytic opportunity for artistic development and experimentation through space, time, counseling, and community, while thinking about how their dual roles support each other. From an intensive studio session in August, to a year of follow up meetings, residents are encouraged to reflect on their art practice and arts professionals career as a symbiotic, balanced system. Each individual brings administrative resources, artistic skills, personal struggles and victories to the experience. With each different group, underlying themes reoccur and evolve through the framework of shared knowledge and passion for the art community as seen from both the front and backend.

[Image: Sebastien Sanz de Santamaria (top left), Sarah Walko (top right), Ellen Uzane Schneiderman (bottom left), Theresa Marchetta (bottom right)]

Past and present residents were invited to propose projects for A Necessary SHIFT that were produced during their residency year or inspired by their experience. A number of collaborations have emerged from this process. The exhibition covers the spectrum of painting, sculpture, video work, and performance. Exhibition-related events take the form of screenings, performances, bike- tours, and discussions that further demonstrate the complex challenges faced, unique rewards, and essential roles these artist/arts workers play in the arts community.

### Schedule

From 2013-11-15 To 2013-12-21

### Artist(s)

Sean Carroll, Paul Clay, Jonathan Durham, Francis Estrada, Chantel Foretich, Howard Halle, Elizabeth Hamby, Amber Hawk Swanson, Felicity Hogan, Gisela Insuaste, Jamie Kim, Theresa Marchetta, Naomi Miller, Karen Ostrom, Douglas Paulson, Hatuey Ramos-Fermin, Sebastien Sanz de Santamaria, Ellen Uzane Schneiderman, Roddy Schrock, Carolyn Sickles, Chad Stayrook, Rachel Vera Steinberg, David Terry, Sarah Walko, Beatrice Wolert, Elizabeth Hamby, Gisela Insuaste, Douglas Paulson, Hatuey Ramos-Fermin, Todd Shalom, Chad Stayrook

### Website

<http://www.efanyc.org/a-necessary-shift/?SSScrollPosition=0>

### Fee

Free

### Venue Hours

From 12:00 To 18:00  
Closed on Mondays, Tuesdays,  
Sundays  
Note:Also by appointment

### MyNYAB

LOGIN

[Want to see this?](#) [0]

[Recommend it?](#) [0]

### Within Walking Distance

4 mins - Lower East Side Printshop:  
["What Say You?" Exhibition](#)  
(Prints)  
ends in 39 days.

5 mins - The Camera Club of New York :  
[Pixy Yijun Liao "Let's Make Love"](#)  
(Photography)  
ends in 6 days.

5 mins - chashama Window Space (266 W 37th St. ):  
[Traci Horgen "Luxuria Barbarica"](#)  
(Prints, Installation)  
ends in 19 days.

10 mins - Hunter College Times Square Gallery:  
["Hunter College MFA Thesis" Exhibition Fall 2013](#)  
(Painting, Drawing, Photography, Sculpture, Installation, Video installation)  
ends in 19 days.

10 mins - Heskin Contemporary:  
[Lisa Stefanelli "Who's Woods These Are"](#)  
(Prints)  
ends in 31 days.

11 mins - The Horticultural Society of New York:  
[Daniel Gordon "Shadows and Pears"](#)  
(Prints, Other)  
ends in 51 days.

### Hideki Nakajima & Hideki Inaba GRAPHIC EXHIBITION

**4GALLERY**  
DEC 5, 2013 - JAN 26, 2014  
Brooklyn NYC



### HAM JIN UNSEEN

NOV 14 - DEC 21, 2013  
DOOSAN GALLERY NEW YORK



Mary Teichman

Dec. 5th - 20th, 2013 / NY Co Gallery

### Most Popular Events

Salvatore Emblema "Transparency"  
Ends in 24 days

Marc Dennis "An Artist, A Curator And A Rabbi Walk Into A Bar"  
Ends in 17 days

Tim Rollins and K.O.S. "On The Origin"  
Ends in 10 days

Richard Serra "New Sculpture"  
Ends in 52 days

Kenzo Miwami "Mass Production"  
Ends in 3 days

[View full list](#)

Sign up for our email newsletter:

SUBSCRIBE

New York art info in your inbox!  
Hot exhibitions, openings,  
reviews, & more for free!

The Bubble Machine