

The Immigrant Artist Biennial: Here, Together!
September 9–October, 24, 2020

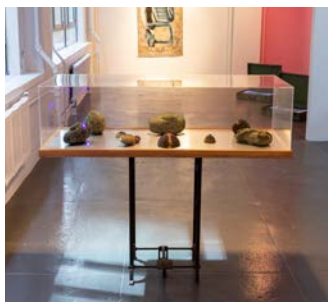
Curated by Katya Grokhovsky



BLANKA AMEZKUA

US : WE.
2020.

Silk flowers, pins, latex paint (in situ).
78 x 78 inches.



ESPERANZA CORTÉS

EMERALD TEARS.
2010-2014.

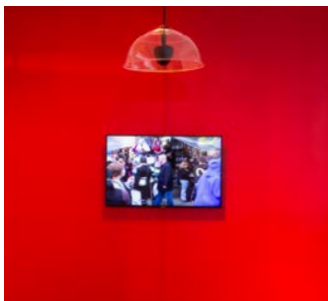
Clay, crystal, glass, metal base & plexi vitrine.
66 x 24 x 50.5 inches.



BAHAREH KHOSHOOEE

#EverChangingFacade.
2020.

Foam sculpture and video.
60 x 60 x 60 inches (approximate).



DANIELA KOSTOVA

Body Without Organs: Bulgarian Bar.
2006.
Video.
27' 46".



COLE LU

The Proof.

2019.

Silicone, rigid foam, metal, ink.

9.8 x 9.8 x 7.8 inches.



Thoroughbred

(No Caster of Weather Foretold).

2019.

Bronze.

17.7 x 11.8 x 9.8 inches.



First Reversal, They've Come By Mistake to a Lake That is Sure to Reverse Any Lering Leaf (come to think of it, I don't want to tell you about that incident).

2019.

Stainless steel, aluminum, epoxy, cotton, leaves.

20.4 x 14.5 x 7.8 inches.



ANA MENDIETA

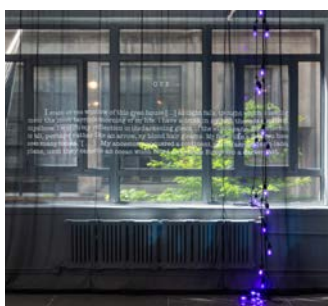
Parachute.

1973.

1/2-inch reel-to-reel video w/ Sound (digitized).

7' 9".

Courtesy the Estate of Ana Mendieta Collection, LLC and Galerie Lelong & Co., New York



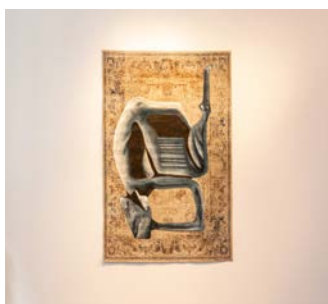
LEVAN MINDIASHVILI.

Levani's Room: AMERICA.

2020.

Translucent printed chiffon & string lights.

144 x 144 x 24 inches (approximate).



QINZA NAJM.

Her World, Her View.

2017.

Acrylic on carpet.

72 x 48 inches.



ANNA PARISI

Hail Potamotrygon Leopoldi.

2015.

Collage on paper.

32 x 32 inches, plus frame.



DAÀPÒ RÉO

Why Should We Be Deported? This is Very, Very Hard for a Family.

2020.

Metal, barbed wire, fabric.

84 x 72 x 12 inches.



YALI ROMAGOZA.

The Mistress of Loneliness : Chapter 1 :The Departure.

2019.

Suitcase with video.

31.5 x 29 x 6.9 inches.



YALI ROMAGOZA.

The Mistress of Loneliness: Chapter 2: Pursuit of Happiness.

2019.

Suitcase with video.

31.5 x 29 x 6.9 inches.